

# From Silos to Systems Thinking: Shifting the Paradigm in West Moreton

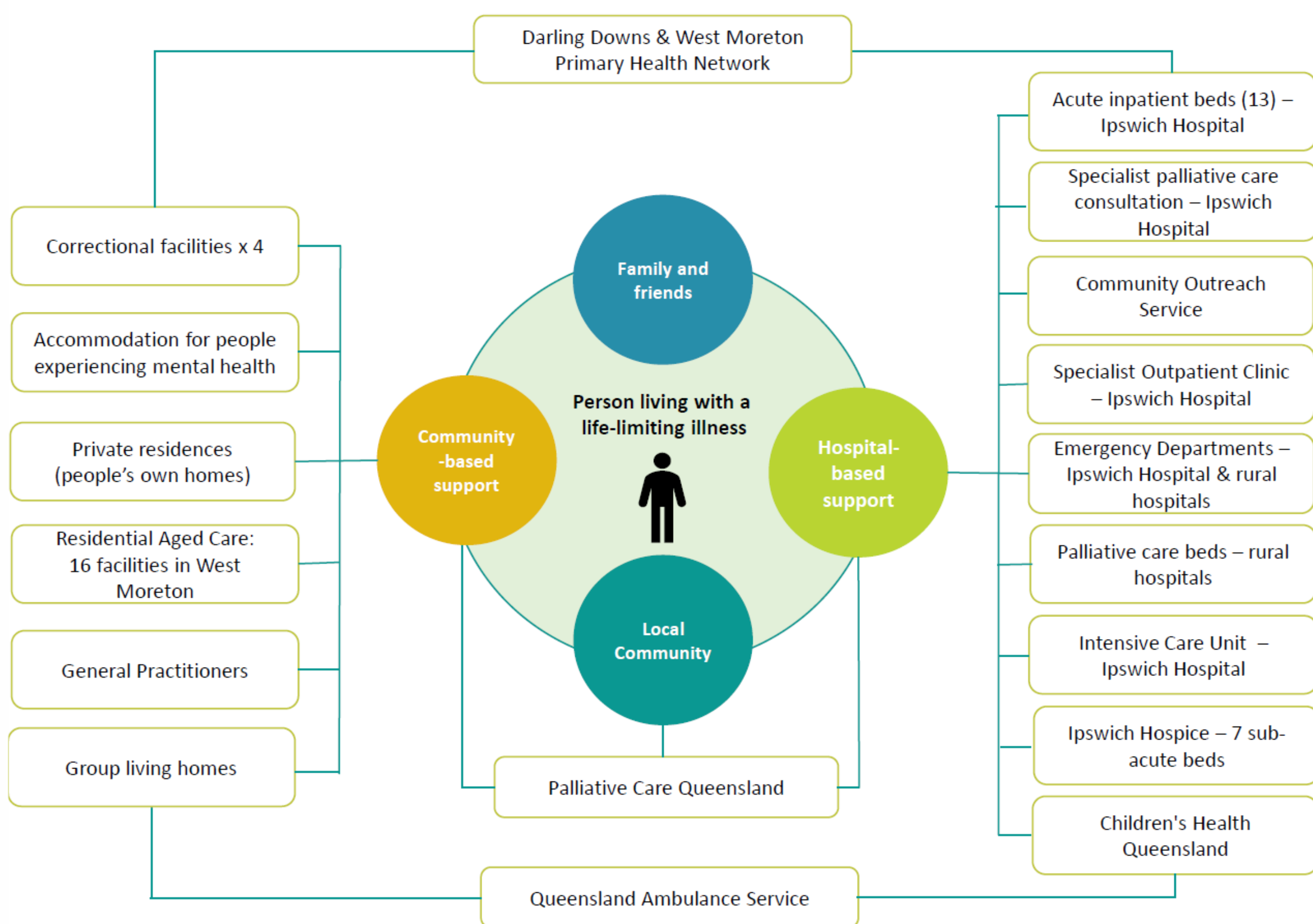


West Moreton Health covers all of Ipswich City Council area and parts of the Scenic Rim, Lockyer Valley and Somerset local council areas. The region has a total population of over 290,000 people and covers an area of 9,521 square kilometres from Esk in the north, Gatton in the west, Ipswich in the east and Boonah in the south.

The total number of deaths in the region covered by West Moreton Health is approximately 1450 per year, representing approximately 5% of all deaths in Queensland. The median age of death in West Moreton Health region is 77 years and 46% of all deaths in West Moreton are classified as premature deaths (death at aged 0 – 74 years).

Cardiovascular disease has the highest proportion in all causes of death in West Moreton (33%), followed by Cancer (29%). Suicide and self-inflicted harm is the cause of 4% of all deaths and this represents the highest age standardised rate per 100,000 population in Queensland.

## Care at the End of Life Ecosystem in West Moreton

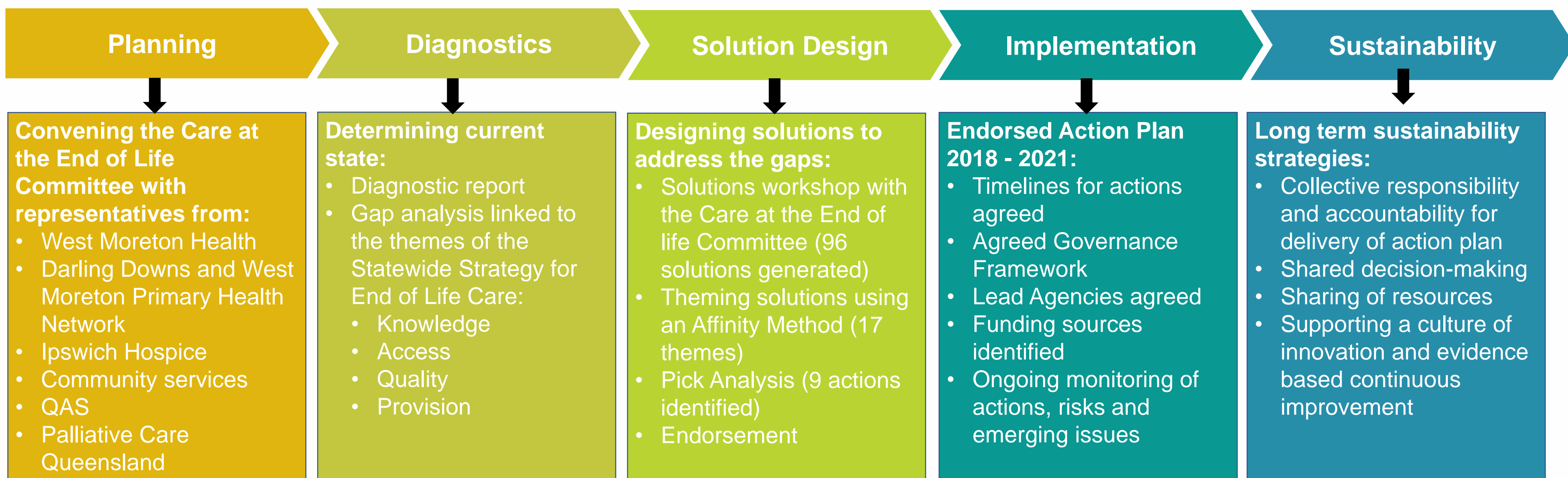


Care at the end of life is everyone's business, but we often take a siloed approach to planning and delivering care. In response to the Queensland Health End of Life Care Strategy (2015) West Moreton Health has taken a 'whole of system' approach to improving care at the end of life for people living in the West Moreton Health region.

In July 2018 West Moreton Health established a regional Care at the End of Life Committee with the aim of improving care through system-wide collaboration, integration and cooperation. The Committee includes representatives from government, non-government, hospital and community organisations from across the health and social care spectrums; including consumer representation.

West Moreton Health's innovative approach to establishing a system-wide Care at the End of Life Committee has torn down the silo walls to share resources and effort; and work together for better outcomes for the community. West Moreton Health is 'caring better together'.

### A Clinical Services Redesign Methodology was employed to develop the Action Plan:



Author:

West Moreton Health Region

Contact:

**Care at the End of Life Committee**  
 Carol Hope, Principal Project Manager,  
 Service Improvement Team, West Moreton Health  
 carol.hope@health.qld.gov.au

