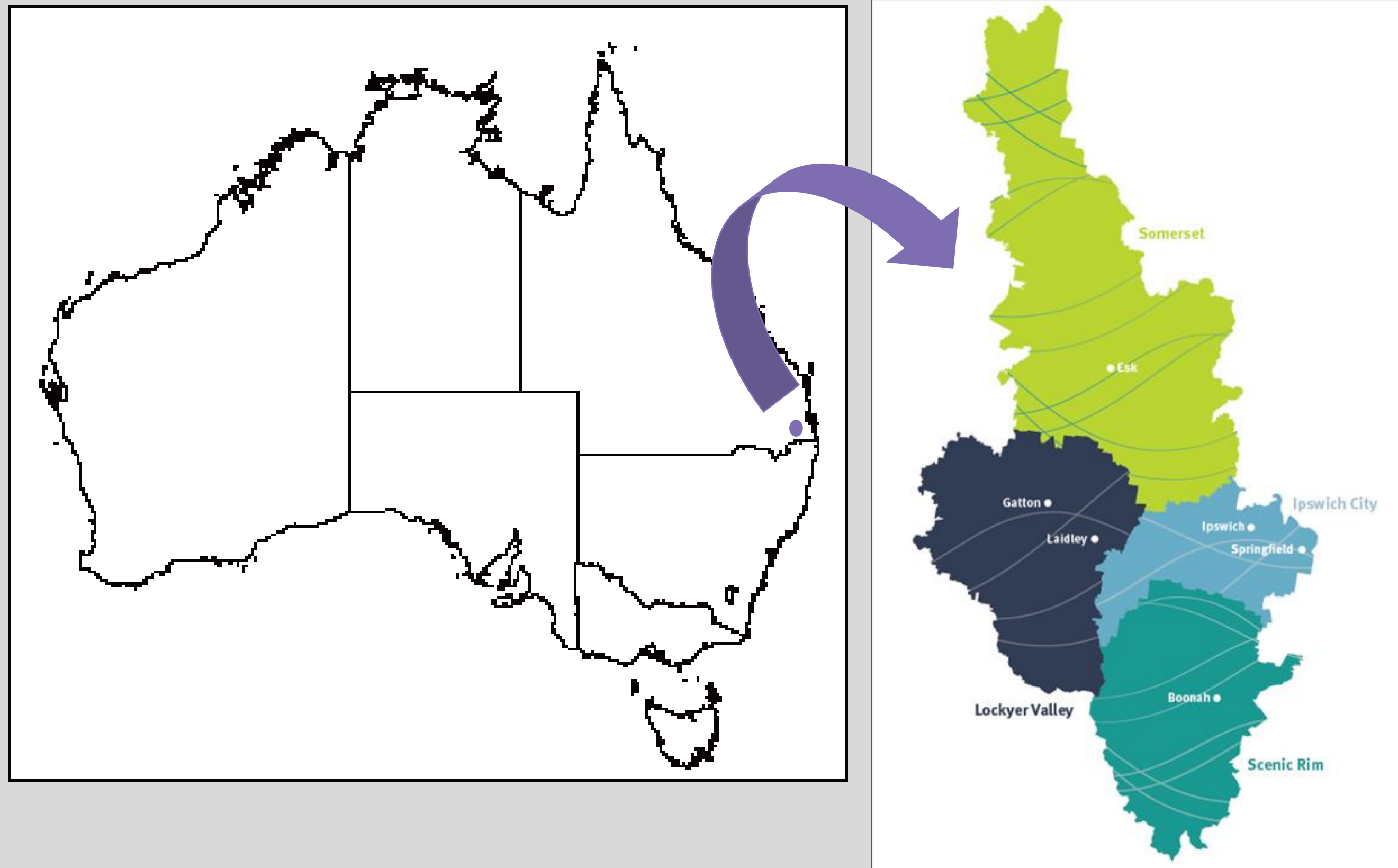


FLYING IN FORMATION: IMPROVING CARE AT THE END OF LIFE THROUGH A SHARED AGENDA



The West Moreton region is located approximately 50km west of Brisbane in Queensland. The region has a total population of over 290,000 people and covers an area of 9,521 square kilometres from Esk in the north, Gatton in the west, Ipswich and Springfield in the east and Boonah in the south. A significant challenge for West Moreton is the expected 43% increase in the population from 2016 to 2026 and the 113% increase to 593,000 by 2036. Furthermore, the population of older people in the West Moreton region is anticipated to grow by 83% in the next 10 years.

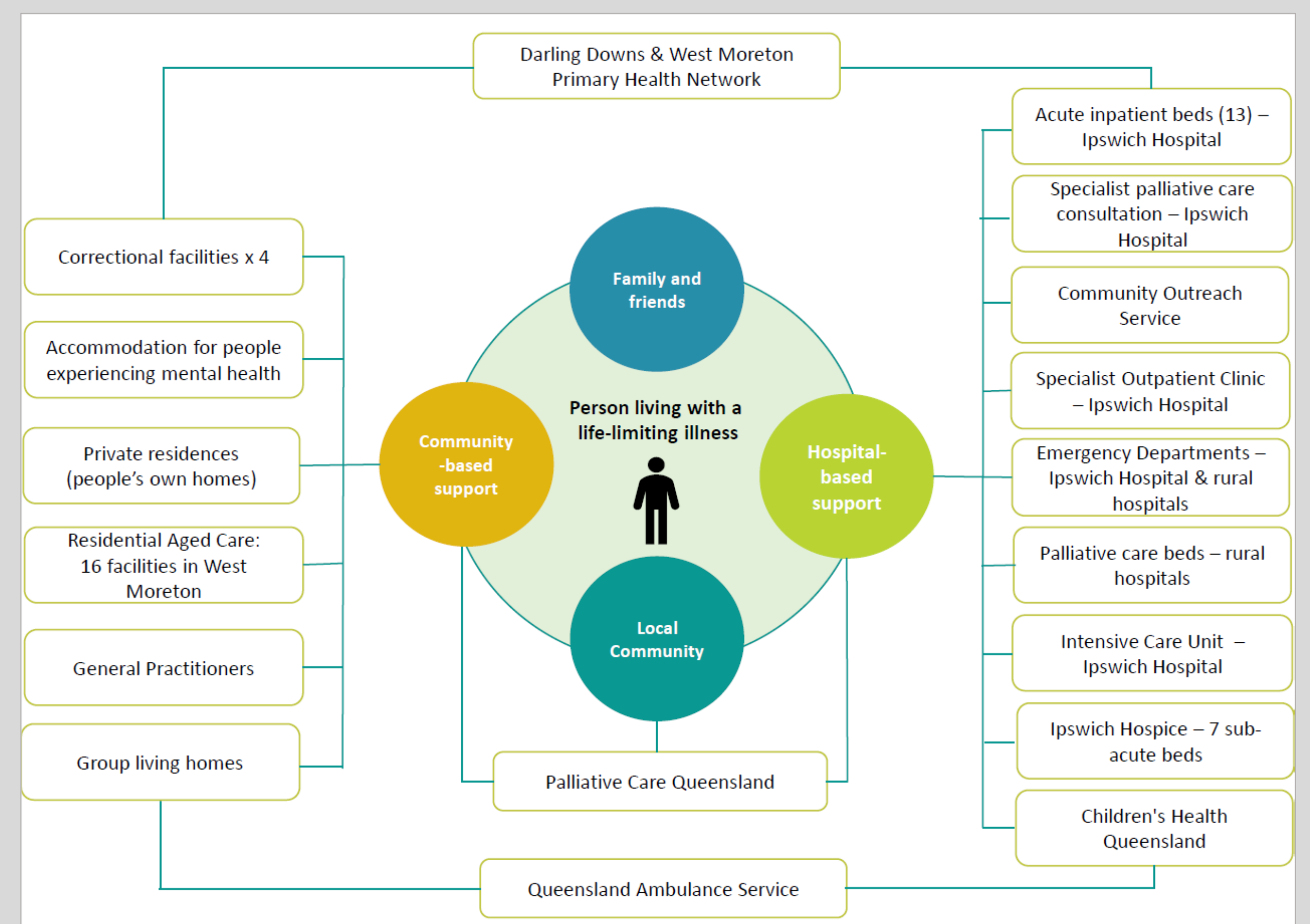
The West Moreton Region Care at the End of Life Committee was established to develop and execute a shared action plan that addresses gaps in capacity and capability to provide quality care at the end of life. The Committee includes representatives from government, non-government, hospital and community organisations from across the health and social care spectrums; including consumer representation.

The total number of deaths in the West Moreton region is approximately 1450 per year, representing 5% of all deaths in Queensland.





The median age of death in West Moreton region is 77 years and 46% of all deaths in West Moreton are classified as premature deaths (death at aged 0 – 74 years).

Cardiovascular disease has the highest proportion in all causes of death in West Moreton (33%), followed by Cancer (29%).

The care for people living with a life-limiting illness is undertaken by a network of health professionals, organisations, services, social supports and family. The West Moreton region has a plethora of services and organisations that provide and contribute to palliative care for the West Moreton community. For this reason, the work delivered by the West Moreton Region Care at the End of Life Committee is crucial to supporting community and health services alike.



West Moreton Region Care at the End of Life Committee Shared Action Plan (2018 – 2021)

Service Direction	No.	Action summary	Lead Agency
Knowledge 	1	Develop a knowledge and understanding framework for care at the end of life in the West Moreton region.	Primary Health Network / West Moreton Health collaboration
	2	Organise and host an End of Life Forum in West Moreton Health region.	
	3	Hold a 'Good Life, Good Death Expo' in Ipswich.	Palliative Care Queensland
Access 	4	Develop a West Moreton Regional Health Pathway for care at the end of life.	West Moreton Health Pathways Program
	5	Develop an information pack about care at the end of life for people in West Moreton Health region.	Ipswich Hospice
Quality 	6	Co-design of integrated processes with QAS for care at the end of life.	QAS / West Moreton Health collaboration
Provision 	7	Mapping of community assets for care at the end of life in West Moreton region.	Commonwealth Respite and Carelink Centre
	8	Hold a Compassionate Communities Conversation Forum.	Palliative Care Queensland / Queensland Compassionate Communities
	9	Develop Compassionate Communities in the West Moreton region.	



Key Achievements 2018 - 2019



- Funding received from Darling Downs and West Moreton PHN
- West Moreton Region Knowledge Framework developed and launched.
- End of Life Forum held on 8 August 2019

- Care at the End of Life Health Pathways launched July 2019

- Consumer and caregiver consultations in progress 'You Can't Ask That!' format approved

- Funding received from Clinical Excellence Queensland
- Project commenced and due to complete June 2020

- Compassionate Community Conversation held June 2019



Author:
Contact:

West Moreton Region Care at the End of Life Committee
Strategic Projects Team, West Moreton Health
wm_strategicprojects@health.qld.gov.au

Supported by
West Moreton Health

